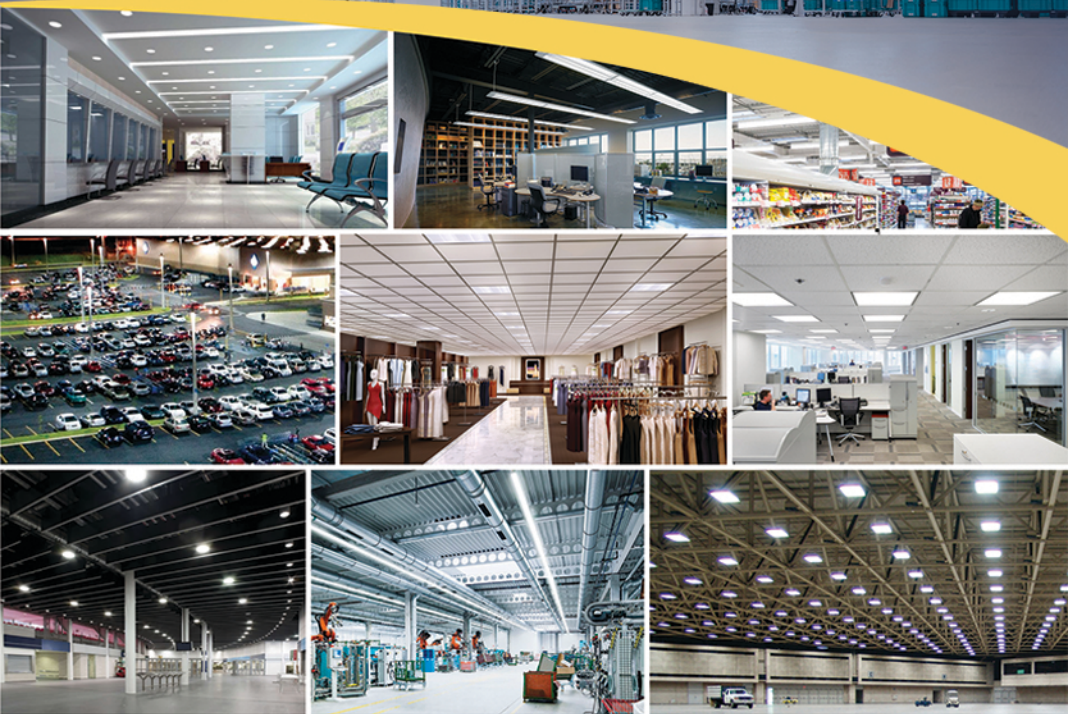


UNAMIS CLEAN ENERGY PARTNERS

COMMERCIAL • INDUSTRIAL • EXTERIOR
HORTICULTURAL • LAMPS & BULBS



2022 – 2023 PRODUCT BROCHURE

19785 West 12 Mile Road, Suite 345

Southfield, Michigan 48076

Office: (248) 327-0257

Direct: (810) 516-0005

Fax: (248) 485-6614

Who We Are

Dunamis Lighting is an OEM manufacturer of best-in-class LED lighting solutions. We specialize in creating high quality, energy efficient lighting that will result in energy cost savings for our customers. Dunamis services customers in the commercial, industrial, construction, electrical, utility, municipal, healthcare, educational and facility management industries.

Dunamis Lighting

Dunamis and its partners have designed, developed and tested Design Lights Consortium Best-in-Class LED lamps, while offering highly competitive pricing to its customers.

- Specifications comply with Energy Star, DLC, Lighting Facts and/or UL/ETL Standards. All lamps are subject to LM79 and LM80 Testing, insuring the highest quality products to our customers.
- Standard 5 Year Product Warranty; Extended Warranty Available

The Dunamis Difference

Dunamis sets itself apart in the market with its complete lighting solutions:

- Factory Direct Relationship and Pricing.
- World Class LED Specifications, Standards and Manufacturing.
- Comprehensive ROI and Savings Benefits Analysis.
- Average 60 - 75% Energy Savings
- Financing and Leasing – Cost less than the Achieved Savings.
- Completion of all Rebate and Incentive Filings.
- Non-Interruptive Professional Installation.
- Our Go To market strategy is to eliminate layers of distribution.
- We control cost and expense by going direct to the end user.
- Dunamis controls the specifications related to manufacturing process.
- All equipment is manufactured specifically for each individual project.



INDUSTRIAL

DUN-XXXWi



LED High Bay / Flood Tunnel Light
Standard Warranty: 5 Years
Standard Lifetime: 62,000 hours
Mounting: Suspended

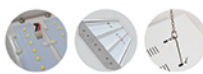


DU898X-LDXXXW



Emergency Battery

Linear High Bay Light
Standard Warranty: 5 Years
Standard Lifetime: 50,000 hours
Mounting: Suspended



Motion Sensor



DUN-HBNXXX-HI

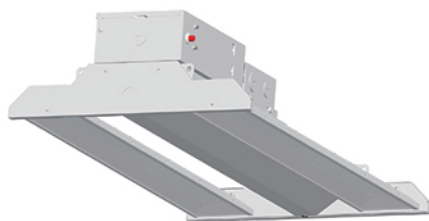


Motion Sensor

IP66 High Bay Light
Standard Warranty: 5 Years
Standard Lifetime: 80,000 hours
Mounting: Suspended



HBLXXD



LED High Bay Light
Standard Warranty: 5 Years
Standard Lifetime: 50,000 hours
Mounting: Suspended



Item	Power	Voltage	CCT	Lumen	CRI	Dimensions
DUN-XXXWi	40-400W	90-480V	3K-6.5K	130lm/w	>75	11.9 x 5.9 x 7.2 (in) - 11.9 x 35 x 7.7 (in)
DU898X-LDXXXW	60-300W	100-480V	2.7K-6.5K	140lm/w	>80	48 x 16 x 4 (in)
DUN-HBNXXX-HI	420-480W	90-295V	2.7K-7.5K	140lm/w	>75	
HBLXXD	80-320W	120-480V	4K-5K	144lm/w	>80	1 x 2 (ft) - 1 x 4 (ft) 2 x 2 (ft) - 2 x 4 (ft)

RHB6-XXXX-PW



Round High Bay Light
Standard Warranty: 5 Years
Standard Lifetime: 50,000 hours
Mounting: Suspended



UFO-XXXW



UFO High Bay Light
Standard Warranty: 5 Years
Standard Lifetime: 50,000 hours
Mounting: Suspended



LW464-LD50W



LED Linear Wrap
Standard Warranty: 5 Years
Standard Lifetime: 50,000 hours
Mounting: Surface



DU486-Y

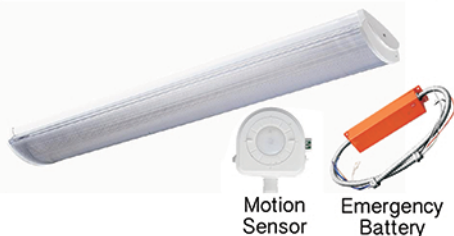


Linear Strip Light
Tube Ready
Standard Warranty: 5 Years
Standard Lifetime: 50,000 hours
Mounting: Ceiling, Surface or Pendant



Item	Power	Voltage	CCT	Lumen	CRI	Dimensions
RHB6-XXXX-PW	100 - 240W	120-277V	2.7K-6.5K	110lm/w	>80	509 x 155 (mm)
UFO-XXXW	100 - 200W	90-305V	3K-6.5K	120lm/w	>70	380 x 206 (mm)
LW464-LD50W	40 - 50W	100-240V	3K-5.5K	100lm/w	>82	47 x 8.25 x 2.75 (in)
DU486-Y	40 - 162W	120-240V	2.7K-6.5K	lamp based		3 7/8 x 6 6/8 x 48 - 51 (in)

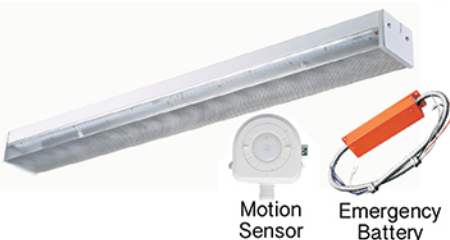
DU428-LD40W-4FT



LED Linear Wrap
Standard Warranty: 5 Years
Standard Lifetime: 50,000 hours
Mounting: Surface



DU456-LD40W-4FT



LED Linear Wrap
Standard Warranty: 5 Years
Standard Lifetime: 50,000 hours
Mounting: Surface



DU834-LDXXW-XFT



LED Linear Light
Standard Warranty: 5 Years
Standard Lifetime: 50,000 hours
Mounting: Surface, Suspended, Recessed



VT486-LD60W

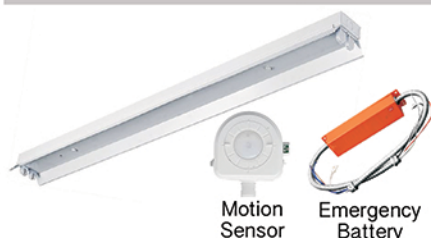


Vapor Tight Fixture
Standard Warranty: 5 Years
Standard Lifetime: 50,000 hours
Mounting: Surface, Suspended



Item	Power	Voltage	CCT	Lumen	CRI	Dimensions
DU428-LD40W-4FT	40W	100-277V	3K-5.5K	122lm/w	>82	46 5/8 x 7 x 3 3/8 (in)
DU456-LD40W-4FT	40W	100-277V	3K-5.5K	122lm/w	>82	46 5/8 x 4 6/8 x 4 (in)
DU834-LDXXW-XFT	40 - 60W	100-277V	3K-6K	100lm/w	>80	46-92 x 3 3/8 x 3 (in)
VT486-LD60W	40 - 60W	110-277V	3.5K-5.5K	110lm/w	84.2	49.75 x 6.75 x 3.75 (in)

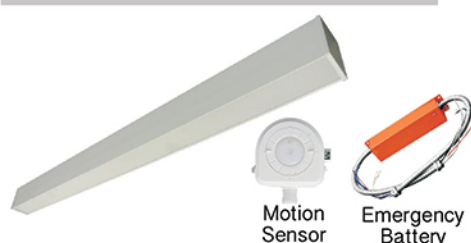
DU452A-Y



24"-96" Linear Strip Light
Standard Warranty: 5 Years
Standard Lifetime:
Mounting: Ceiling, Surface or Pendant



LL811-LD25W-4FT



LED Linear Light
Standard Warranty: 5 Years
Standard Lifetime: 50,000 hours
Mounting: Surface, Recessed, Suspended



L403/L404



LED Area Luminaire
Standard Warranty: 5 Years
Standard Lifetime: 50,000 hours
Mounting: Slipfitter, Bracket



FDXXXW



Flood Light
Standard Warranty: 5 Years
Standard Lifetime: 50,000 hours
Mounting: Knuckle, Slipfitter, Trunnion



Item	Power	Voltage	CCT	Lumen	CRI	Dimensions
DU452A-Y	28-128W	120-240V	2.7K-6.5K	lamp based		3 1/8 x 1 3/8 x 22 7/8 - 96 7/8 (in)
LL811-LD25W-4FT	25 - 40W	100-277V	3K-6K	100lm/w	>80	48 x 2 3/4 x 3 1/7 (in)
L40XX	120 - 240W	100-480V	3K-5.7K	116lm/w	>70	572 x 330 x 134 (mm)
FDXXXW	70 - 110W	120-277V	4k-5K	114-127lm/w	>70	12.9 x 10.9 x 5.5 (in)

HORTICULTURAL LIGHTING

DUN-CAN



LED Canopy Light
Standard Warranty: 5 Years
Standard Lifetime:
Mounting: Ceiling, Surface



DHPSL-1000A-35



Horticultural Light - Double Ended
Standard Warranty: 5 Years
Standard Lifetime: 50,000 hours
Mounting: Surface, Suspended



DUN-S007



480W LED Grow Light
Standard Warranty: 5 Years
Standard Lifetime: 50,000 hours
Mounting: Suspended



DUN-AP016



500W LED Grow Light
Standard Warranty: 5 Years
Standard Lifetime: 50,000 hours
Mounting: Suspended



Item	Power	Voltage	CCT	Lumen	CRI	Dimensions
DUN-CAN	100-175W	120-277V		3.3K-6.7K lm		
DHPSL-1000A-35	1000W	110-240V	>2000	130lm/w	35	245 x 390 x 555 (mm)
DUN-S007	480W	100-240V		100lm/w		695 x 380 x 65 (mm)
DUN-AP016	500W	100-240V				614 x 600 x 80 (mm)

COMMERCIAL LIGHTING

SP22-DX-XXE



Edge Lit LED Panel Light
Standard Warranty: 5 Years
Standard Lifetime: 50,000 hours
Mounting: Recessed



Motion Sensor



Emergency Battery

SP24-DX-XXE



LED Panel Light
Standard Warranty: 5 Years
Standard Lifetime: 50,000 hours
Mounting: Surface, Recessed



Motion Sensor



Emergency Battery

SP14-DX-XXE



LED Panel Light
Standard Warranty: 5 Years
Standard Lifetime: 50,000 hours
Mounting: Recessed



Motion Sensor



Emergency Battery

CEX-XXX



Motion Sensor

6 - 8 inch Commercial LED Down Light
Standard Warranty: 5 Years
Standard Lifetime: 50,000 hours
Mounting: Recessed



Item	Power	Voltage	CCT	Lumen	CRI	Dimensions
SP22-DX-XXE	40 - 52W	100-480V	3K-5K	106lm/w	>80	24 x 24 x 2.5 (in)
SP24-DX-XXE	52 - 65W	110-480V	4K-5K	100lm/w	>80	24 x 48 x 2.5 (in)
SP14-DX-XXE	40 - 52W	100-480V	4K-5K	92lm/w	>80	12 x 48 x 2.5 (in)
CEX-XXX	18-40W	100-277V	3K-5K	80 - 90lm/w	>80	8.64x7.48 (in)

DU892E-LDXXW



LED Troffer
Standard Warranty: 5 Years
Standard Lifetime: 50,000 hours
Mounting: Recessed



Emergency Battery

TR24-DM-XXE



LED Troffer
Standard Warranty: 5 Years
Standard Lifetime: 50,000 hours
Mounting: Recessed



Emergency Battery

DU892-LD40W



LED RDI Troffer
Standard Warranty: 5 Years
Standard Lifetime: 50,000 hours
Mounting: Recessed



Emergency Battery

TR22-DM-XXE



LED Troffer
Standard Warranty: 5 Years
Standard Lifetime: 50,000 hours
Mounting: Recessed



Emergency Battery

Item	Power	Voltage	CCT	Lumen	CRI	Dimensions
DU892E-LDXXW	40-50W	100-277V	3.5K-5.5K	110lm/w	>80	47 5/8 x 24 x 3 1/5 (in)
TR24-DM-XXE	40-65W	100-480V	4K-5K	106lm/w	>80	48 x 24 x 3.9 (in)
DU892-LD40W	40W	100-277V	3K-5K	110lm/w	>80	24 x 24 x 3 1/5 (in)
TR22-DM-XXE	27-42W	100-480V	4K-5K	104lm/w	>80	24 x 24 x 3.9 (in)

EXTERIOR LIGHTING

DU-WP002



LED Wall Pack

Standard Warranty: 5 Years

Standard Lifetime: 50,000 hours

Mounting: Surface



WP-XXX-003-PW



LED Wall Pack

Standard Warranty: 5 Years

Standard Lifetime: 50,000 hours

Mounting: Surface



DUN-XXX-WiT



LED Parking Lot / Area Light

Standard Warranty: 5 Years

Standard Lifetime: 50,000 hours

Mounting: Bracket, Trunnion, Knuckle



Item	Power	Voltage	CCT	Lumen	CRI	Dimensions
DU-WP002	30-50W	120-277V	3K-5K	105lm/w	>70	232x338x160 (mm)
WP-XXX-003-PW	60-120W	120-277V	2.7K-6.5K	105lm/w	>70	9.05x18.26x13.9 (in)
DUN-XXX-WiT	75-265W	90-480V	2.7K-6.5K	130lm/w	>78	25.1 x 13.8 x 3 (in)

LAMPS & BULBS

DU-US-A-XXX-XX



A-Lamp Omnidirectional



- E26 Base
- 120V Input, 50/60Hz
- PF > 0.7
- CRI > 80
- Available in a wide range of color temperatures from 2700k-5000k
- Suitable for use in enclosed fixtures
- Shatter resistant
- 3 year limited warranty
- Omni-directional lighting distribution
- Smooth dimming feature and compatible with a wide variety of dimmers



Item Number	Wattage	Lamp Shape	Base Type	Wattage Equivalent	Lumens	Efficacy (lm / W)	Life Span	MOL (Inch)	MOD (Inch)	Weight (Lb)	Dimmable
DU-US-A 196.5WUXYZ-01	6.5	A19	E26	40	480	73	25000	4.49	2.36	0.13	Y
DU-US-A 191 0.5WUXYZ-01	10.5	A19	E26	75	1100	104	25000	4.49	2.36	0.13	Y
DU-US-A 2117WUXYZ-01	17	A21	E26	100	1600	94	25000	5.39	2.87	0.44	Y
DU-US-A 197WUXXY-03	7	A19	E26	40	480	68	25000	4.49	2.36	0.13	Y
DU-US-A 198WUXXY-03	8	A19	E26	40	480	60	25000	4.49	2.36	0.13	Y
DU-US-A 198.5WUXXY-03	8.5	A19	E26	60	810	95	25000	4.49	2.36	0.13	Y
DU-US-A 199.5WUXXY-03	9.5	A19	E26	60	810	85	25000	4.49	2.36	0.13	Y
DU-US-A 191 0WUXXY-03	10	A19	E26	60	810	81	25000	4.49	2.36	0.13	Y

DU-US-BR-XXX-V2



BR Reflector



- E26 Base
- 120V Input, 50/60Hz
- PF > 0.7
- CRI > 80
- Beam Angle: 110°
- Available in a wide range of color temperatures from 2700k-5000k
- Suitable for use in enclosed fixtures
- Shatter resistant
- 3 year limited warranty
- Smooth dimming feature and compatible with a wide variety of dimmers



Item Number	Wattage	Lamp Shape	Base Type	Wattage Equivalent	Lumens	Efficacy (lm / W)	Life Span	MOL (Inch)	MOD (Inch)	Weight (Lb)	Dimmable
DU-US-BR308W2XXYE-V2	8	BR30	E26	50	650	76/81	25000	5.35	3.77	0.32	Y
DU-US-BR309.5W2XXYE-V2	9.5	BR30	E26	65	750	78	25000	5.35	3.77	0.32	Y
DU-US-BR3010.5W2XXYE-V2	10.5	BR30	E26	65	850	80	25000	5.35	3.77	0.32	Y
DU-US-BR4013W2XXYE-V2	13	BR40	E26	75	1100	84	25000	6.10	4.88	0.32	Y

DU-US-BR30-XXX-V2



BR Reflector



- E26 Base
- 120V Input, 50/60Hz
- PF >0.7
- CRI>80
- Beam Angle: 110°
- Available in a wide range of color temperatures from 2700k-5000k
- Suitable for use in enclosed fixtures
- Shatter resistant
- 3 year limited warranty
- Smooth dimming feature and compatible with a wide variety of dimmers



Item Number	Wattage	Lamp Shape	Base Type	Wattage Equivalent	Lumens	Efficacy (lm / W)	Life Span	MOL (Inch)	MOD (Inch)	Weight (Lb)	Dimmable
DU-US-BR308W2XXYE-V2	8	BR30	E26	50	600	75	25000	5.35	3.77	0.32	Y
DU-US-BR309.5W2XXYE-V2	9.5	BR30	E26	65	650	68	25000	5.35	3.77	0.32	Y

DU-US-PARXXX-V2



PAR Spot Light



- E26 Base
- 120V Input, 50/60Hz
- PF >0.7
- CRI>80
- Multiple beam angles for precise light projection
- Airflow design enhances better air circulation
- Available in a wide range of color temperatures from 2700k-5000k
- Not for use in enclosed fixtures
- Shatter resistant
- 3 year limited warranty
- Smooth dimming feature and compatible with a wide variety of dimmers



Item Number	Wattage	Lamp Shape	Base Type	Wattage Equivalent	Lumens	Efficacy (lm / W)	Life Span	MOL (Inch)	MOD (Inch)	Weight (Lb)	Dimmable
DU-US-PAR207W3XXYE-V2	7	PAR20	E26	50	540	77	25000	3.49	2.53	0.17	Y
DU-US-PAR3011W3XXYE-V2	11	PAR30	E26	75	900	81	25000	4.49	3.86	0.36	Y
DU-US-PAR3813W3XXYE-V2	13	PAR38	E26	100	1050	80	25000	5.07	4.49	0.47	Y
DU-US-PAR3818W3XXYE-V2	18	PAR38	E26	120	1400	78	25000	5.07	4.49	0.47	Y

T8-AXXX

T8 LED Tube



- Emitting Color: Warm White, Natural White, Pure White
- 120V Input, 50/60Hz
- PF >0.9
- CRI>80
- Beam Angle: 270°
- CAP: Non-Rotatable
- Internal Driver - No Ballast Needed
- Suitable for use in enclosed fixtures



Item Number	Wattage	Voltage	LED Type	CCT	Lumens	Life Span	Power Type	Dimensions
T8-A0623	10W	95-265V	SMD2835	2500K - 6500K	900 - 1100lm	-	NON-Isolated	2FT
T8-A1223	18W	95-265V	SMD2835	2500K - 6500K	1600 - 2000lm	-	NON-Isolated	4FT
T8-A1523	22W	95-265V	SMD2835	2500K - 6500K	2100 - 2600lm	-	NON-Isolated	5FT

T8-BXXX

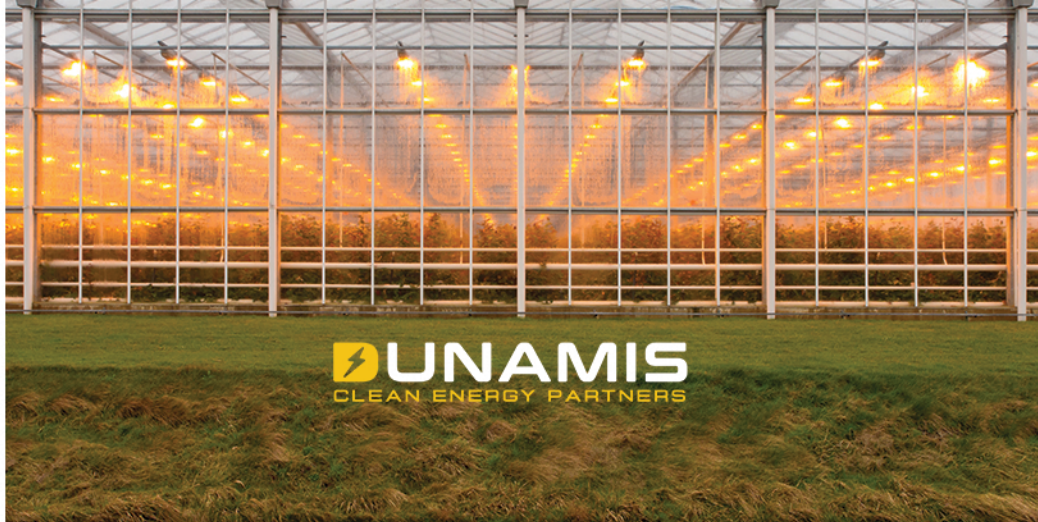
T8 LED Tube



- Emitting Color: Warm White, Natural White, Pure White
- 120V Input, 50/60Hz
- PF >0.9
- CRI>80
- Beam Angle: 270°
- CAP: Non-Rotatable
- Plug and Play Ballast Compatible
- Suitable for use in enclosed fixtures



Item Number	Wattage	Voltage	LED Type	CCT	Lumens	Life Span	Power Type	Dimensions
T8-B0622	10W	95-265V	SMD2835	2500K - 6500K	900 - 1100lm	-	NON-Isolated	2FT
T8-B1222	16W	95-265V	SMD2835	2500K - 6500K	1600 - 2000lm	-	NON-Isolated	4FT
T8-B1522	20W	95-265V	SMD2835	2500K - 6500K	2100 - 2600lm	-	NON-Isolated	5FT



Dunamis Lighting

19785 West 12 Mile Road Suite 345
Southfield MI 48076

www.DunamisEnergy.com

info@dunamisenergy.com

(p) 248.327.0257 | (f) 248.234.6176



This brochure is representative of our product line. Additional products and models are available.